

BRICK
MANAGEMENT + LETTINGS



52 Wraysbury House 4-16 London Road, Staines-Upon-Thames, London, TW18 4BP

£1,350 Per month



52 Wraysbury House 4-16 London Road, Staines-Upon-Thames, London, TW18 4BP

£1,350 Per month

New to the market, this well presented split level galleried unfurnished two bedroom apartment is located in the popular Wraysbury House development.

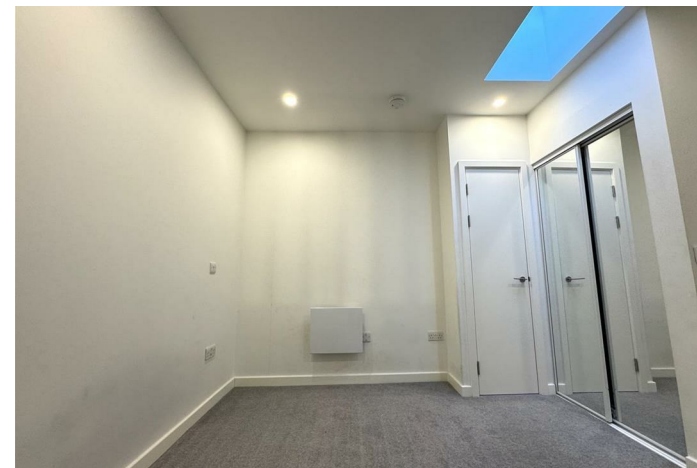
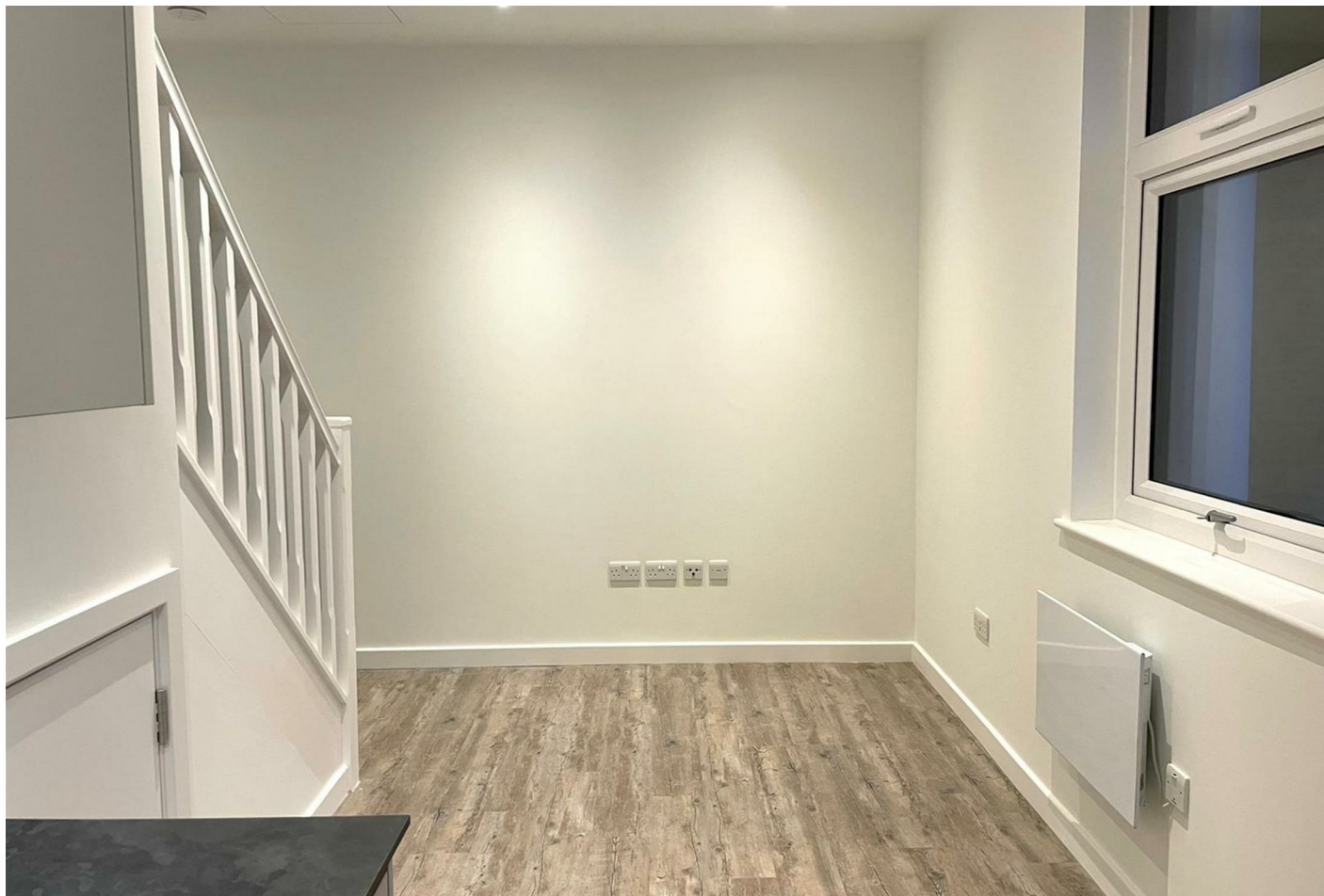
This impressive property benefits from an open plan living / dining area with wooden flooring, stylish fully fitted kitchen, large galleried double bedroom with fitted wardrobe and luxury shower room.

The property has secure gated underground parking for one vehicle.

Wraysbury House is just a short walk from Staines town centre and the mainline railway station. The M25 is just a five minute drive away, offering easy access to Heathrow Airport.

Description

Situation

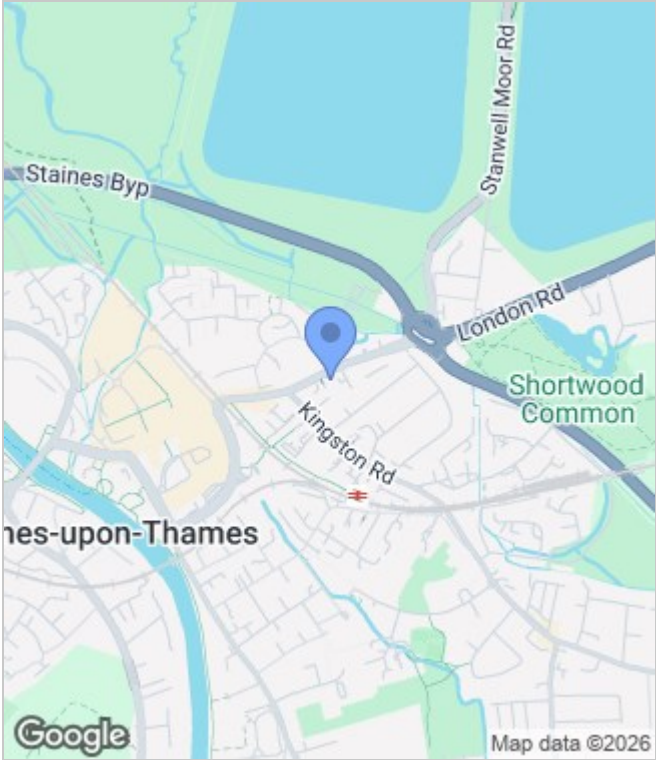


Unfurnished
Council Tax Band: C
Available: 10th March 2026

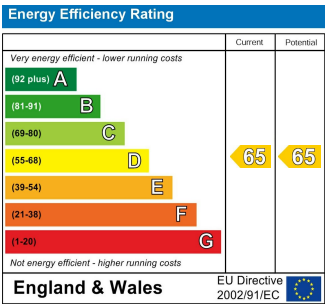
Floor Plans



Area Map



Energy Performance Graph



These particulars, whilst believed to be accurate are set out as a general outline only for guidance and do not constitute any part of an offer or contract. Intending purchasers should not rely on them as statements of representation of fact, but must satisfy themselves by inspection or otherwise as to their accuracy. No person in this firms employment has the authority to make or give any representation or warranty in respect of the property.